

Recreation Near R-Wild Horse Ranch

(Information obtained from a variety of sources.)
(Please check with individual locations for schedules and pricing.)

Old Shasta - Red Bluff

Just five miles west of Redding, the historic mining town of Old Shasta is being restored to its full glory. Old Shasta, not to be confused with the city of Mt. Shasta, was once a thriving mining town boasting a population of over 3,500. In the heart of town is the Shasta State Historic Park, which includes a renovated courthouse museum with relics from the 1840s gold rush era, the authentic Litsch General Store which has been completely restored to its original state and the remains of several buildings and shops destroyed by the fire in June 1853. The park also includes large grassy areas that are popular wedding sites in the spring and summer. Museum is open year round and can be reached by calling 530-243-8194.

Colman National Fish Hatchery

North of Red Bluff off I-5. (530) 365-8622 • Open daily from 7:30 a.m. to dusk, the hatchery rears 13 to 15 million chinook salmon and about 1 million steelhead annually.

Ishi Wilderness, Red Bluff

The Ishi, a 41,000 acre low-elevation wilderness, featuring basaltic outcroppings, caves, and pillar lava formations, lies in the southern Cascade foothills, 20 miles east of Red Bluff. Many of the trails in Ishi originated as Native American travel routes and range from easy to difficult.

Waterworks Park

Located two tenths of a mile east of Hwy 299, the park has three giant serpentine water slides, the "Flash Flood," an inner tube ride, an activity pool, a childrens' pool with slide and fountain, and facilities for beach volleyball. Lockers, dressing rooms, picnic tables and food are available. The park is open daily from Memorial Day weekend to Labor Day. Take Bumey/Alturas exit Highway 299E & Interstate 5 in North Redding, CA.

Park Hours	10 a.m. to 8 p.m. seven days per week. Memorial Day to Labor Day. (Special functions to 10 p.m.)
Park Prices	One price allows unlimited use of all water park attractions. Special limited passes at reduced rates are available. Food, gifts & games are extra.
Season Pass	Special introductory prices on season passes for the family or single are now available.
Group Rates	Special rates are offered for group parties.
Rain Checks	Waterworks Park does not issue rain checks due to inclement weather conditions.
Picnics	Food, drinks, picnic lunches, glass containers and alcohol cannot be brought into the park. A picnic area is located outside the park for your convenience.
First-Aid	Staff is on duty at all times; please contact any employee for assistance.
Park Re-Entry	If you wish to leave the park and return during to same day, you just have your hand stamped at the front entrance.

Lake Shasta Caverns

A visit to Lake Shasta Caverns is far more than just an exciting exploration of nature's underground magic, thousands of years in the making. It begins with a colorful catamaran cruise across the lake a 15 minute sail on Shasta's sky blue waters, surrounded by majestic mountain beauty. By all means bring your camera. Opportunities are unequalled for colorful and unusual photographs you will always highly prize.

Until 1964. Lake Shasta Caverns were seen each year by only a handful of hardy "spelunkers" who inched their way through steep, restricted natural fissures to view its startling formations. Then a tunnel was driven to enable visitors to enter the series of connected chambers from a lower level. The caverns remain just as nature made them. Only conveniences such as paved walkways and stairs, guardrails, and indirect lighting have been added. The humidity level is 95% and the temperature is a comfortable 58 degrees constantly.

Multi-colored fluted columns... magnificent stone draperies in symmetrical folds.. stalactite and stalagmite formations studded with brilliant crystals... milky white flowstone deposits in miniature waterfalls and other unusual and graceful forms. It is this complete fairyland of nature's creations in the Caverns which has led geologists to compare its beauty favorable to that of any other limestone and marble cave in the nation.

While lore of the Wintu Indian tribe suggests the Caverns have been known since antiquity, the first recorded while explorer was James A. Richardson, a federal fisheries employee. His claim of discovery is still clearly legible on the wall where he wrote it that day - November 3, 1878 with carbide from his miner's lamp.

A comfortable 30 passenger bus will carry you high up a mountainside, more than 800 feet above the lake surface. This winding drive to the cave entrance affords a constantly changing panorama of spectacular mountain and lake scenery in every direction. By all means bring your camera. Opportunities are unequalled for colorful and unusual photographs you will always highly prize.

Open All Year	Park & Gift Shop open 8:00 am
Summer Schedule	Memorial Day to Labor Day: Tours depart every 1/2 hr. 9am to 4pm April, May and September: Tours depart hourly from 9am to 3pm
Winter Schedule	October 1st to March 31st: Tours depart 10am, 12 noon, 2 pm Closed Thanksgiving & Christmas Day
Group Tours	Discounts available for group of 20 or more by prior appointment ALL TOURS ARE CONDUCTED WITH COMPLETE NARRATED GUIDE SERVICE A portion of Lake Shasta Cavern Tour is over property under use permit from the US Dept. of Agriculture, US Forest Service, Shasta Trinity National Forest
Boaters	Free docking facilities available at Cavern Landing – East side McCloud River

Shasta Dam Tours

The second largest dam in the United States, Shasta Dam is located approximately 12 miles north of Redding via Interstate 5. Completed in 1945, Shasta Dam is the highest center overflow dam in the world, and is three times higher than Niagara Falls. Free tours are conducted daily through the interior of the dam. Shasta Dam and Lake is a "must see" for anyone visiting beautiful Northern California. For tour information, please call: 530-275-4463 - inf. desk at Dam.

Caldwell / Lake Redding Park

These parks are located on the banks of the Sacramento River and are home to the Redding Museum and the Carter House Natural Science Museum. They also feature a public swimming pool, playgrounds, picnic areas, softball and soccer fields, horseshoe pits. and a nine-hole public golf course. Off Highway 273 north, take Quartz Hill Road.

Self-Guided Tour of Redding's Historic Architecture

- 1. 1748 Market Street, Hotel Redding: (1927)** On the site of the first two story house built in Redding (1872), is this concrete and terra cotta Mission Revival hotel. "It was one of the more prestigious modern hotels in Redding, it advertised a swimming pool." (Patrick Pry, 'A Pictorial History of Building in Redding'). Currently owned by Gary Barber, the building serves as a transient and residential hotel.
- 2. 1731 Market Street, Cascade Theatre: (1934-1935)** This Art Deco reinforced concrete theatre is enhanced by a roofline WPA style frieze depicting miners, railroaders, steam fitters, carpenters, etc. Richard Conrick was the architect. Salih Brothers was the contractor. The interior decoration and frieze were executed by W. Chevalis and M. Sautocono. UA Theatre Circuit now owns the building. After viewing the theatre, if you are walking, you may choose to drive to the next two buildings and continue your walk from the Dudley Saeitzer Residence.
- 3. 2319 Cliff Drive, Leslie Jones Residence: (1925-1927)** Perched at the top of a hill, this English Period Revival stucco residence, with its spacious setting, was constructed by Leslie Jones, a grocery proprietor, for his family. The current owners, Gene and Tammy Nichols, have lived in the home since 1972.
- 4. 2100 West Street, Saeitzer Residence: (1906)** This modified First Bay Tradition (Bay Area Shingle) residence was designed by Bernard Maybeck as a wedding present to Dudley and Florence Saeitzer. Dudley Saeitzer, a prominent local businessman, was the son of the co-founder of the McCormick Saeitzer Company (general wholesale and retail merchants). Francis and Dolores Lord, the current owners, have lived in the house since 1964.
- 5. 1804 Chestnut Street, Edward Zeis Residence: (1903)** This shiplap Queen Anne Cottage style house was built for the Edward Zeis family. Mr. Zeis arrived in Redding in 1895 and became a well-known local businessman and politician. The current owners, Del and Greta Williamson, have lived in the house since 1971.
- 6. 1764 Chestnut Street, Herbert Bass Residence: (1898)** Herbert and Ida Bass, both part of Shasta County's pioneer families, had this shiplap Queen Anne style house built when their four daughters reached high school age. Herbert Bass was a businessman involved in logging, hotels, stores, homesteading and telephone lines. Ann Sunlight, the current owner, has lived in the house since 1979.
- 7. 1400 Chestnut Street, Unknown: (1927)** A representative Craftsman Bungalow, this clapboard house served as the All Saints Episcopal Church rectory from 1946 to 1956. The current owners, Biran and Deena Humble, have lived in the house since 1982.
- 8. 1520 West Street, John Scott Residence: (1895)** An informal setting and large front porch set off this shiplap Classical Revival house. It was built by J. Scammon for John Scott, Registrar of the County Land Office. Charles H. Behrens, County Sheriff, bought the house in 1899, and the house has remained in the family since then. Charles Behrens' grandson, Richard Behrens Eaton, has lived in the house since 1918.
- 9. 1440 West Street. James Holt Residence: (1890)** The builder of this brick Queen Anne/Italianate house, James Holt, co-owned a brickyard, the Holt and Gregg Company. The south side yard even boasted a brick doghouse (now gone). Over the years, the house has served as a private residence, apartments, and now professional offices. Ben Leep is the current owner.
- 10. 1407 West Street. Redding Women's Improvement Club: (1932)** At the top of a small hill, this Spanish Eclectic style building has served as a clubhouse since its construction. The purpose of the organization, which was founded in 1902, is "to cause the City of Redding to be improved and beautiful." Since the mid-1970's, the group has been called the Redding Womans' Club.

Approximate mileage: 2 1/2 miles

Approximate time: 60 minutes

Arboretum (By the River) - Redding

This easy family hike initially allows a close up study of life, then escorts you along the river bank for both wild passages and tranquil segments of the Sacramento River. Between crossings of Sulphur Creek, you'll admire uncivilized mountain views beyond the seasonal wetlands that grace the grounds of the Redding Arboretum.

From North Market Street (Highway 273), drive just north of the Sacramento River Bridge and instead of going west into Caldwell Park, turn east at Quartz Hill Road. Drive .2 miles until the paved road ends at a large, paved parking lot. The asphalt trail promptly leads past restrooms, then down into a riverside forest. Look for the large river rocks denoting the 20 numbered points of interest.

Hike Distance	2.2 miles
Total Elevation Gain	100 feet
Difficulty	Easy, for the entire family
Water	None past the staging center; bring your own

The Sacramento River Trail - Redding

With Mt. Shasta towering in the north, Mt. Lassen shimmering to the east and the Trinity Alps glistening in the west, water is a treasured resource in Redding. Winding through the center of Redding is the city's most treasured water resource - the Sacramento River.

This river creates a lush corridor through the middle of an urban area. Appreciating this fact, the City of Redding recognized a rare opportunity and built the Sacramento River Trail. This scenic byway winds along both sides of the Sacramento River and provides residents and visitors alike with a peaceful escape from the rigors of daily life.

The 8 foot wide trail is designed for pedestrian, rollerblading, and bicycling traffic. The trail attracts people of all ages - from the dedicated jogger to the elderly couple out for an evening stroll, from the weekend bicyclist and family outings to the fisherman looking for that ideal angling spot.

Starting at the Diestlehorst Bridge entrance, the southern portion of the trail covers 2.5 miles of fairly flat spaces and rolling hills to the pedestrian footbridge below Keswick Dam. This bridge, the first of its kind in North America, is a 13-foot-wide, 420-foot-long concrete stress-ribbon structure. While unique to this continent, this bridge type has been used in Czechoslovakia, Switzerland and Germany and has received a national award from the Portland Cement Association, a state award from the California Parks and Recreation Society and has been promoted by the State Department of Parks and Recreation as an "environmentally safe bridge."

Crossing over to the north side, the trail continues for another 1.4 miles over steeper, more rugged terrain that contours with the river. With a slight break through a comfortable residential area, the trail then picks up again for 0.8 of a mile and exits on Lake Redding Drive, near Caldwell Park and the original entrance. From start to finish, the complete loop is approximately 6 miles and can easily be walked in a couple of hours.

To complement the original 6-mile loop, a 1.7-mile extension of the Sacramento River Trail has been added on the river's north bank from the Diestlehorst Bridge to Benton Ranch. The new section of trail is 12 feet across and runs downriver through Lake Redding and Caldwell Parks under the Market Street vehicle bridge, stopping near the downstream end of Benton Ranch.

Besides being a pleasant outing, the Sacramento River Trail can also be an educational experience, offering insights into Redding's early history and natural surroundings. Along the trail, point-of-interest markers explain that the present trail crosses the road traveled by pioneers, mountain men and gold miners. Certain hints of the past - such as the site of a ferry crossing and the remains of hydraulic mining operations - can be readily seen from the trail. Well-placed benches provide a break to rest or to contemplate the beauty of the area's foliage with the slow movement of the river.

Falls - Northern California

Mossbrea Falls	Located in the city of Dunsmuir. 40-Minute walk each way. Falls approximately 50'. Best photos in morning.
King Creek Falls	Located in Lassen Volcanic Park. 3 miles - allow 2 1/2 hrs. Falls approximately 70'. Best photos July-Oct., in morning.
Mill Creek Falls	Located in Lassen Volcanic Park. 4.6 miles round trip - allow 2 1/2 hrs. Falls approximately 700'. Highest falls in Lassen Park.
Burney Falls	Located in McArthur Burney State Park. Falls approximately 129'. Considered 8th wonder of the world. Best photos early hours!
Hatchet Creek Falls	I-5 to 299E, approximately 33 miles to Big Bend Road. Swimming hole. Best photos mid-day.
Potem Falls	I-5 to 299E approximately 28 miles to Fender's Ferry Road, left 18 miles. Approximately 45'. Best photos early morning.
McCloud Falls	UPPER/MIDDLE/LOWER - 5 Miles east of McCloud. Driving route is unpaved road, impassable in inclement weather. Best photos midday
Sweetbriar Falls	8 miles south of Dunsmuir. Sweetbriar exit. Travel east short distance, park west side of railroad. Walk across bridge. Best photos late morning.

State Parks

For camping reservations up to seven months in advance at any state park. call Destinet at (800) 444-PARK. For other information, call the parks at the numbers listed below.

Ahjumawi Lava Springs State Park 335-2777	Boat access only. Use "rat Farm" boat launch on Big Lake. about four miles from the Inter-Mountain Fairgrounds in McArthur. Day use only.
Castle Crags State Park 235-2684	Open daily; day use is \$5 per vehicle. Take Interstate 5 to the Castella exit near the Siskiyou-Shasta county line.
McArthur-Burney Falls Memorial State Park 335-2777	Open daily; day use is \$5 per vehicle, \$4 for seniors 62 and over. Take Highway 299 east of Burney; travel six miles north on Highway 89.
Shasta State Historic Park 243-8194	Park grounds and picnic area open daily. Courthouse Museum open Weds. thru Sunday from 10am to 5pm, closed Mon.-Tues. Admission is \$2 for adults and teens, \$1 for children 6-12. and free for children 5 & under. Take Highway 299 to Shasta. 6 miles west of Redding.
Weaverville Joss House State Historic Park 623-5284	Open Weds. thru Sunday from 10am to 5pm closed Mon.-Tues. Tours on the hour until 4pm. tour fee is \$2 for adults and teens, \$1 for children 6-12. and free for children 5 and under. Gift shop and free historic exhibit. Take Highway 299 to Weaverville.
William B. Ide Adobe State Historic Park 529-8599	Open daily from 8am to sunset; call for schedule of living history programs. Parking fee \$3 per vehicle. Take Interstate 5 to Red Bluff; follow North Main Street to Adobe Road.

Lassen Volcanic National Park

Whether you like to camp, fish, hike, view spectacular scenery, learn more about nature, or simply relax, visitors to the north state can enjoy 106,000 acres of volcanic terrain at Lassen Volcanic National Park. The National Park northeast of Red Bluff, offers its visitors fishing, horseback riding and during the winter months, cross-country skiing and guided snowshoe walks. The trans-park road (Highway 89), open only in summer, traverses near Lassen Peak at the 8,500' level and leads motorists to railheads for Sulfur Works, Bumpass Hell, Kings Creek Falls and the Devastated Area. For information call (530) 595-4444.

Lakes

Ruth Lake

Ruth Lake is half way between Eureka and Red Bluff on Highway 36. This is quite a drive on a narrow road at times, but well worth the trip if you plan to stay a while in this beautiful country. The Lake rests at an elevation of 2,800 feet and has a surface area of 1,200 acres. It was formed by damming the Mad River in 1962, and it is now a popular recreational facility offering boating of all kinds, fishing and camping. The Flying "AA" Ranch has its own airport, motel, horses, swimming pool tennis courts and an excellent restaurant featuring a weekend open-pit barbecue.

130 miles to R-Wild Horse Ranch • 94 miles to Red Bluff • 101 miles to Redding

Information	Ruth Lake CSD 155C Van Duzen Road P.O. Box 31 Mad River CA 95552 (707) 574-6332
Boating	Power, Row, Canoe, Sail, Waterski, Jet Ski, Windsurf & Inflatables, Full Service Marina, Launch Ramps, Docks
Rentals	Fishing Boats & Motors, Waterski, Pontoon
Recreation	Waterplay, Picnicking, Hiking, Horseback Riding: Trails & Rentals
Fishing	Rainbow Trout, Kokanee Salmon, Bass, Catfish
Hunting	Deer, Boar, Quail, Grouse, Wild Turkey
Other	Flying "AA" Ranch: Ruth Star Rt., PO Box 700 Bridgeville CA 95526 (707) 574-6227 Cabins, Restaurant, Tennis, Swimming Pool, Airport, Car Rental, Full Vacation facilities, Disposal Station

Whiskeytown Lake & Keswick Reservoir

Whiskeytown, at an elevation of 1,209 feet has 36 miles of coniferous shoreline. Tree-shaded islands, numerous coves, and 3,220 surface acres of clear blue water invite the watersport enthusiast. The boater will find complete marine facilities and over 5 square miles of open water. Waterskiing and sailing are excellent. Fishing is good from bank or shore for trout, Kokanee salmon, bass and pan fish. The National Park Service maintains the facilities which include picnic areas and campgrounds. Keswick Reservoir is at an elevation of 587 feet and has a surface area of 630 acres. Fed by cold water released from Shasta Dam, Keswick provides the angler with lunker rainbows. Keswick is open to all boating and the launch ramp and picnic area are operated by Shasta County.

Whiskeytown Lake, eight miles West of Redding on Highway 299, is the jewel of the Whiskeytown-Shasta-Trinity National Recreation Area. The lake offers picnicking and camping opportunities at Brandy Creek and Oak Bottom recreation areas. Besides being a favorite lake for sailing and windsurfing, other activities include fishing, gold panning, hiking, hunting, and horseback riding.

Whiskeytown Lake is host to the popular Annual Sailing Regatta held Memorial Day Weekend.

78 miles to R-Wild Horse Ranch • 53 miles to Red Bluff • 25 miles to Redding
183 miles to Sacramento • 238 miles to San Francisco

Information	Superintendent PO Box 188 Whiskeytown, CA 96095 (916) 241-6584	Keswick Reservoir: Shasta CDPW 1655 Placer Street Redding CA, 96001 (916) 246-5661
Boating	Whiskeytown: Open to all boats, Full Service Marina, Sailing Regattas Keswick: Open to all boats, Paved Launch Ramp	
Rentals	Whiskeytown: Fishing, Ski, Sail, Canoe, Pontoons Keswick: n/a	
Recreation	Swimming, Picnicking, Groups, Hiking & Riding Trails	
Fishing	Kokanee Salmon, Brown & Rainbow Trout, Spotted Bass, Large & Smallmouth Bass, Catfish, Bluegill, Crappie	
Hunting	Deer, Waterfowl	
Other	Campground Programs, Scuba Diving, Grocery Store, Snack Bar, Bait & Tackle	

Claire Engle (Trinity)

Trinity Lake, also known as Clair Engle Lake, rests at the foot of the spectacular Trinity Alps at an elevation of 2,400 feet. The 145 miles of shoreline are covered by pine, cedar and oak trees creating a camper's delight. Although water level fluctuation can cause considerable hazards, the boater will find plenty of water in this 17,000 surface acre lake. There are hundreds of quiet coves for the fisherman to tie up in overnight and catch fish for dinner. Campgrounds, marinas and other facilities are extensive, and recreational opportunities range from boating to mountain climbing in the Trinity Alps.

84 miles to R-Wild Horse Ranch • 97 miles to Red Bluff • 66 miles to Redding
227 miles to Sacramento • 282 miles to San Francisco

Information	U.S. Forest Service Drawer T Weaverville CA 96093 (916) 623-2121
Boating	Power, Row, Canoe, Sail, Waterski, Jet Ski, Windsurf & Inflatables, Full Service Marinas, Launch Ramps, Docks, Berths, Moorings, Storage, Gas
Rentals	Fishing, Ski, Houseboats & Pontoons
Recreation	Swimming, Picnicking, Hiking, Horseback Riding: Trails & Rentals, Backpacking, Campfire Programs
Fishing	Trout, Kokanee Salmon, Bass, Catfish, Bluegill
Hunting	Deer, Fowl
Other	Motels & Cabins, Snack Bars & Restaurants, Grocery Stores, Bait & Tackle, Laundromat, Gas Stations, Disposal Stations Airports at Trinity Center & Weaverville

Shasta Lake

Shasta Lake is at an elevation of 1,067 feet at the northern tip of the Sacramento Valley on Interstate 5. This huge Lake has over 370 shoreline miles, one-third more than the San Francisco Bay. The four main arms, Sacramento River, McCloud River, Squaw Creek and Pit River, encompass a total surface area of 29,500 acres, making this the largest man-made lake in California. The steep shoreline is covered with tall pine trees. Called by many, "California's Water Wonderland", Shasta is truly a boater's paradise. There are over 16 varieties of fish including the Alabama spotted bass. Complete vacation facilities await the visitor. Tours of the Caverns and Shasta Dam are available.

Shasta Lake is the center of one of America's most diversified outdoor sports areas. With 30,000 surface acres and 370 miles of shoreline, Shasta Lake is noted for being the houseboat capitol of the west. For a relaxing vacation, nothing can compare to houseboating on Shasta Lake, truly a houseboater's dream. Majestic mountains and towering evergreens are the backdrop for some of the most beautiful vacation pictures you'll ever take!

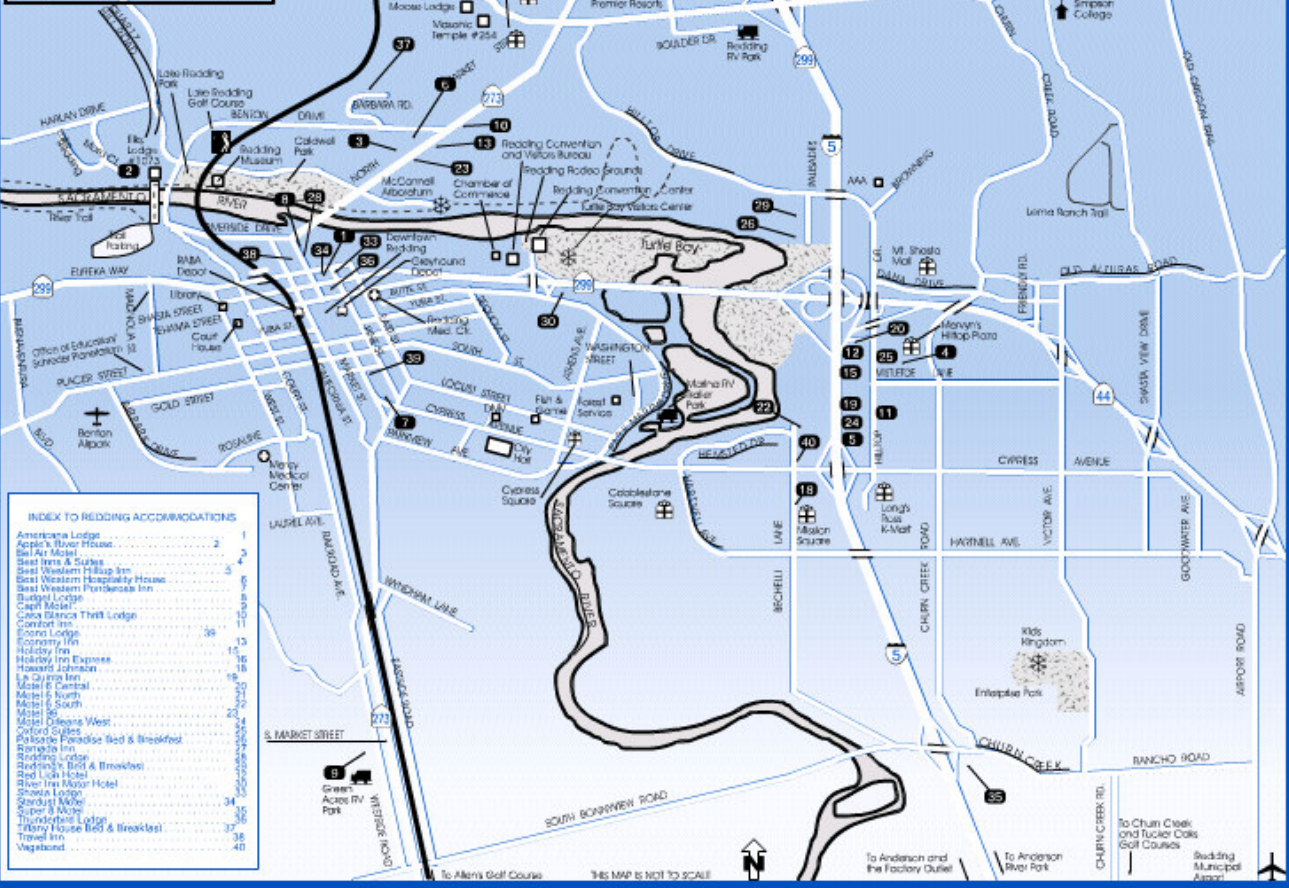
You can explore for days through inlets and coves, plan side trips through abandoned mines and fossil beds or take side trips by car to nearby area attractions. You have a wide choice of motels, RV parks, cabins, houseboat rentals and a selection of public and private campgrounds to choose from.

Shasta Lake is also popular for catching trophy size bass and three to ten pound trout. Other varieties of fish include Bluegills, Salmon, Crappie, Catfish and Sturgeon. The shoreline is wooded and often steep, and offers good hunting for bear, squirrels, quail, wild pigeon, turkey, deer and doves.

59 miles to R-Wild Horse Ranch • 36 miles to Red Bluff • 8 miles to Redding
166 miles to Sacramento • 221 miles to San Francisco

Information	Chamber of Commerce Box 1368 Central Valley, CA 96019 (916) 275-8862
Boating	Power, Row, Canoe, Sail, Waterski, Jet Ski, Windsurf & Inflatables, Full Service Marinas, Launch Ramps, Docks, Berths, Gas, Moorings, Storage. Overnight in boar permitted anywhere.
Rentals	Houseboats, Fishing Boats, Ski Boats
Recreation	Picnicking, Hiking, Backpacking, Campfire Programs, Sightseeing Tours
Fishing	Trout, Bass, Catfish, Bluegill, Perch, Crappie, Kokanee Salmon
Hunting	Deer, Elk, Waterfowl
Other	Motels & Cabins, Snack Bars & Restaurants, Grocery Stores, Bait & Tackle, Laundromat, Gas Stations, Disposal Stations, Trailer Parks, Floating Toilets on Lake

REDDING
CONVENTION &
VISITORS BUREAU
(800) 874-7562 (530) 225-4100



INDEX TO REDDING ACCOMMODATIONS

American Lodge	1
Apple's River House	2
Bell Air Motel	3
Best Inns & Suites	4
Best Western Holiday Inn	5
Best Western Hospitality House	6
Best Western Pendocase Inn	7
Budget Lodge	8
Capitol Motel	9
Carla Blanca Thrift Lodge	10
Comet Inn	11
Conrad Lodge	12
Country Inn	13
Holiday Inn	14
Holiday Inn Express	15
Howard Johnson	16
La Clayton Inn	17
Motel 6 Central	18
Motel 6 North	19
Motel 6 South	20
Motel 80	21
Motel Orleans West	22
Oxford Suites	23
Parkside Paradise Bed & Breakfast	24
Rancho Inn	25
Redding Lodge	26
Redding's Bed & Breakfast	27
Red Lion Hotel	28
Red Lion Plaza Hotel	29
Shasta Lodge	30
Shasta Motel	31
Super 8 Motel	32
Thunderbolt Lodge	33
Trinity House Bed & Breakfast	34
Travel Inn	35
Vegetarian	40